

BACK

FRONT

RED LINE IS THE CUT LINE
This is where the finished product will be cut

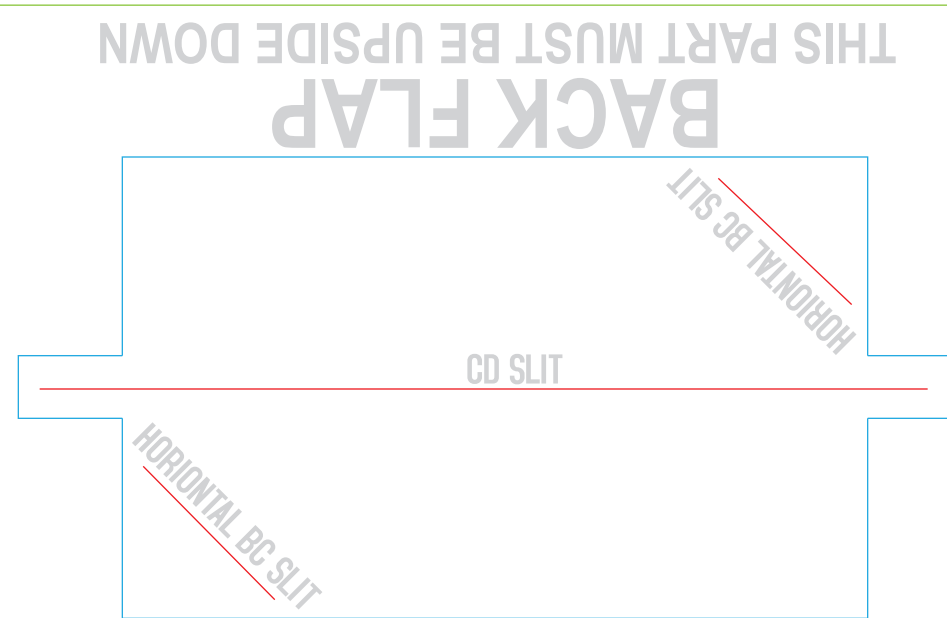
BLUE LINE IS THE SAFETY LINE
Anything that is not getting cut must be inside this blue line

FINISHED SIZE = 9"x12"
WITH BLEED = 18.25"x16.25"

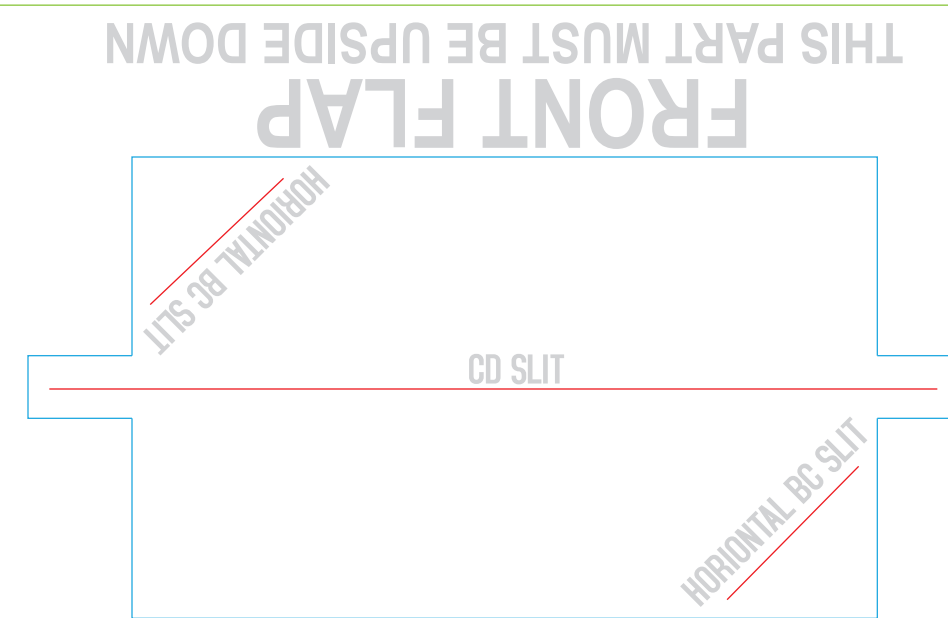
BACK

GREEN LINE IS THE FOLD LINE
This is where the card will be scored and folded

FRONT



BLUE LINE IS THE SAFETY LINE
Anything that is not getting cut must be inside this blue line



BLUE LINE IS THE SAFETY LINE
Anything that is not getting cut must be inside this blue line